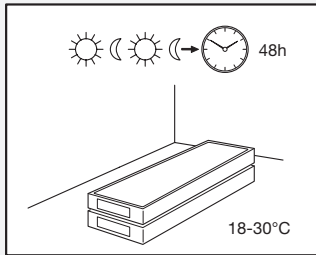


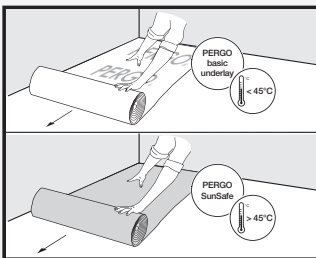
premium click optimum click

5 golden rules



Install your floor with a room- and floor temperature between 18 and 30°C.

Pergo Vinyl must be acclimatized in the room of installation between 18-30°C (64-86°F), preferably at normal room temperature, for a period of at least 48 hours before installation. This floor & room temperature needs to be maintained prior to, during and for at least 24 hours after the installation is completed. Heating ON if needed. (Also floorheating).



Use a SunSafe underlay above 45°C (113°F).

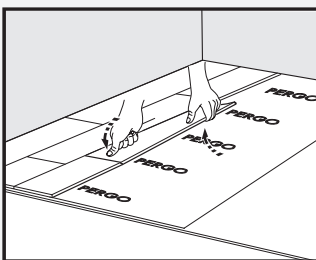
PERGO vinyl has been designed for indoor heated (> 0°C) (32°F) installations, preferably at normal room temperature. PERGO Vinyl cannot be installed in solariums, seasonal porches, camping trailers, boats or any other unheated application.

If the temperature of your floor is expected to raise up to or above 45°C (113°F) due to direct sunlight, it is mandatory to use the SunSafe underlay on a levelled mineral subfloor or to install without underlay on a levelled mineral subfloor.

A heavy wood stove, electrical accumulators, and others should not be installed on top of the PERGO vinyl click floor. It is recommended to install the stove/accumulator first on top of a protection plate, and install the PERGO vinyl around up to the plate and respect the dilatation gaps.

For other critical situations with high local temperatures it is recommended to use PERGO glue down vinyl.

If you have any concerns about the temperature of your floor, please contact the Pergo technical department.



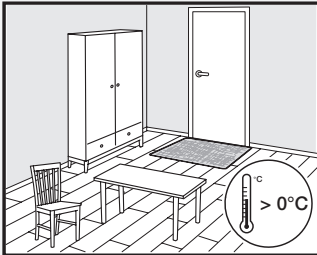
Click-it! Never use a hammer or tapping block.

Slightly lift the plank to be installed by holding your hand underneath about 25 cm from the end joint. Push the short side joint down gently with your thumb moving from the inner corner towards the outside until you hear/feel a "click". Ensure the short side ends are closed by knocking gently on the short side click connection with your wrist. Don't use a hammer or tapping block as it may possible harm your click connection.

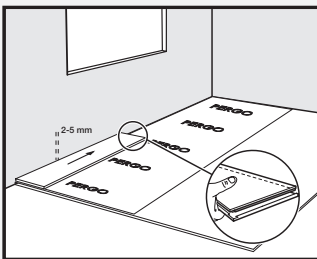
This is the easiest method for installing the PerfectFold V click panels.

premium click optimum click

5 golden rules



Ensure that the indoor climate conditions are always kept $> 0^{\circ}\text{C}$ (32°F) and preferably between $18\text{-}30^{\circ}\text{C}$ ($64\text{-}86^{\circ}\text{F}$). If the floor temperature exceeds 45°C , you must use the SunSafe underlay.



Make sure that you leave an expansion joint of minimum 2mm (0,08inch), preferably 5mm (0,20inch).

For installations with floor heating, you need to leave an expansion gap of minimum 5mm (0,20inch).

Never block the floor. If heavy/fixed objects (ex. kitchen, kitchen island, build-in cabinets, heavy stoves) are on the floor they act as a wall, so the minimum dilatation should be foreseen there.

Floating installation should stay floating!

If this is not possible, use our Pergo glue down vinyl.

premium click optimum click

In order to obtain a good result, we advise to follow all given instructions carefully.

Preparation

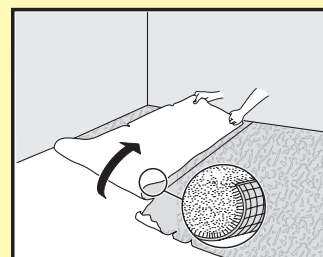
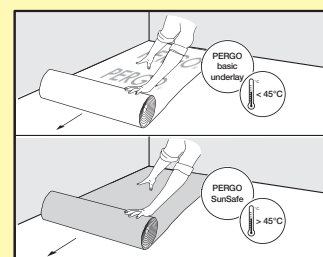
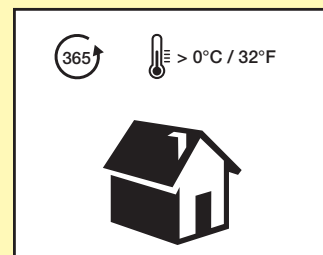
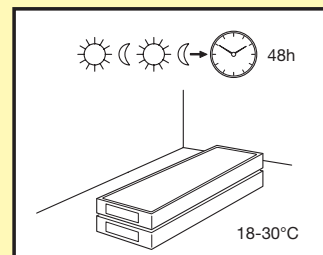
Always store and transport PERGO vinyl floors carefully to prevent distortions. Store and transport the boxes on a flat surface in neat stacks. Never store the boxes upright or in moist, dusty rooms or places with extreme temperatures. PERGO vinyl floors must be acclimatized in the room of installation between 18-30°C (64-86°F) for a period of at least 48 hours before installation. This floor- & roomtemperature needs to be maintained prior to, during and for at least 24 hours after the installation is completed. Installation must be performed between 18-30°C.

PERGO vinyl has been designed for indoor heated (> 0°C) (32°F) installations, preferably at normal room temperature. PERGO Vinyl cannot be installed in solariums, seasonal porches, camping trailers, boats or any other unheated application. If the temperature of your floor is expected to raise up to or above 45°C (113°F) due to direct sunlight, it is mandatory to use the SunSafe underlay on a levelled mineral subfloor or to install without underlay on a levelled mineral subfloor. A heavy wood stove, electrical accumulators, and others should not be installed on top of the PERGO vinyl click floor. It is recommended to install the stove/accumulator first on top of a protection plate, and install the PERGO vinyl around the plate and respect the dilatation gaps. For other critical situations with high local temperatures it is recommended to use PERGO glue down vinyl. If you have any concerns about the temperature of your floor, please contact the Pergo technical department.

The type of subfloor, its quality and its preparation has a big influence on the final installation result. If the subfloor is not appropriate for the installation of PERGO vinyl then necessary actions should be taken. Contact your PERGO vinyl dealer, who will be more than happy to help you. Be aware that unevenness in the subfloor may leave marks and can create gaps in your PERGO vinyl floor.

The subfloor should be stable and firmly fixed. Furthermore it cannot be soft, damaged or loose laid.

- The following floor coverings have to be removed: Carpet, needle felt, cushion vinyl, floating floorcoverings.
- Does not have to be removed: ceramic tiles, glue down laminate and glue down lacquered parquet, fixed wood boards, etc.
- Does not have to be removed, but use of PE-foil is mandatory to avoid migration: glued PVC, hard PVC, VCT, glued linoleum and glue down oiled parquet.

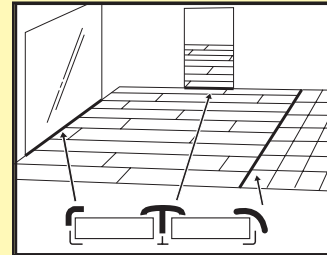


premium click optimum click

Preparation

The type of subfloor, its quality and its preparation has a big influence on the final installation result. If the subfloor is not appropriate for the installation of PERGO vinyl then necessary actions should be taken. Contact your PERGO vinyl dealer, who will be more than happy to help you. Be aware that unevenness in the subfloor may leave marks and can create gaps in your PERGO vinyl floor.

The subfloor should be stable and firmly fixed. Furthermore it cannot be soft, damaged or loose laid. +C26+C46t.

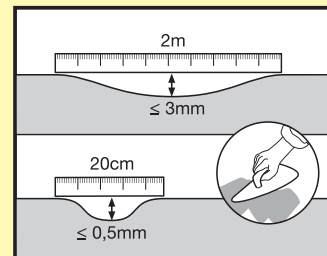
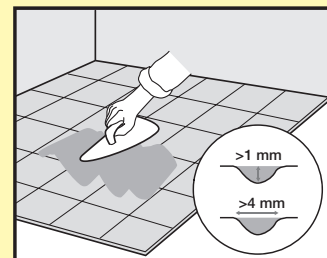


In case of installation on a wooden subfloor, please remove any existing floor covering first. No signs of mold and/or insect infestations should be present. Make sure the subfloor is level and nail or screw down any loose parts. Apply a suitable wooden floor panel, level floor, or use levelling compound on top for a perfect subfloor preparation. The levelling boards must be fixed with an appropriate glue or every 30cm with screws. An eventual crawl space under the plank floor must be sufficient+C26+C46

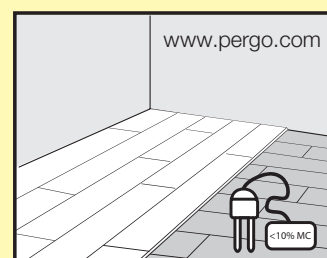
Make sure the subfloor is completely flat. Cement joints between tiles or other gaps of more than 1 mm (0,04inch) in depth and 4 mm (0,16inch) in width should be levelled .

For PERGO Vinyl Click flooring: any unevenness of more than 0,5mm (0,02inch) over a length of 20cm (7,87inch) must be levelled out. The same applies to unevenness of more than 3mm (0,12inch) over a length of 2m (78,7inch).

Bumps should be removed by sanding or scraping. An appropriate levelling compound is required and check if a primer or sealer is needed. In some cases, the use of an underlay can avoid extra levelling of the subfloor.



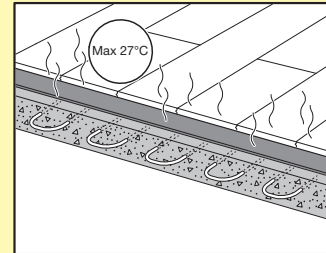
The moisture content of the subfloor must be less than 2,5%CM / 75%RH (cement screed) or less than 0,5%CM / 50%RH (anhydrite subfloor). In the case of floor heating, results must be respectively 1,5%CM / 60%RH and 0,3%CM / 40%RH. Always measure, record and keep your moisture content results.



premium click optimum click

Preparation

Floor heating systems (water / electricity) which are built-in the screed can be used with PERGO vinyl if a constant room & floor temperature of 18°C (64°F) can be guaranteed during acclimatization, installation and 48h after installation. For health and safety reasons and to avoid problems with the PERGO vinyl floor, a floor surface temperature of maximum 27°C (80°F) is allowed.

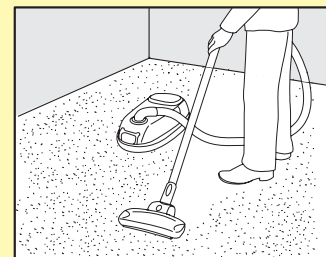


Separate rooms with and without floor heating, or with different temperature controllers, or e.g. corridor vs. kitchen must be installed with a transition profile and an expansion gap of minimum 5mm.

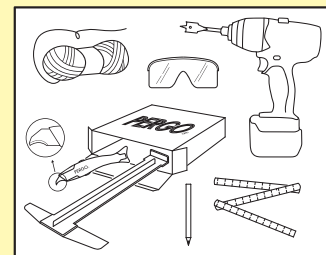
A PERGO vinyl floor cannot be installed on top of so called loose layed heating systems like electrical foils, PERGO QuickHeat, etc.

For a good preparation, read also the separate installation instructions for floor heating on www.pergo.com

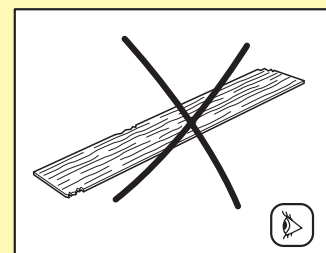
Make sure that the subfloor is dry, flat, stable, clean and free from grease and chemical substances. If needed, scrape off and clean up old adhesives. Prior to installation, carefully remove all debris (including nails), sweep and vacuum. Repair major surface imperfections and large cracks. It is recommended to remove old skirtings and to install new ones after the installation of the floor.



The following standard tools are needed: measurer, safety glasses, thin rope, gloves and a pencil. Never use a tapping block during the installation of PERGO vinyl. In addition to the standard tools, we recommend to use the PERGO vinyl concave cutter knife and installation tool. The latter serves as a 2-in-1 pulling bar and a carpenters square. The use of all accessories other than PERGO vinyl accessories (for example wrong underlay) may cause damage to your PERGO vinyl floor. In such cases the guarantee provided by Pergo will be void. For this reason we advise to use only PERGO vinyl accessories, which have been specially designed and tested for use with your vinyl.



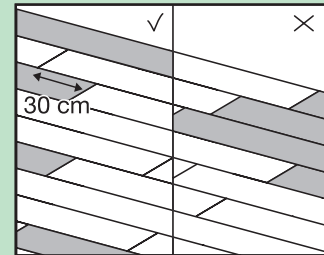
Check all panels before and during installation in optimal light conditions. Defective panels must never be used. An installed plank is considered as accepted and cannot be claimed.



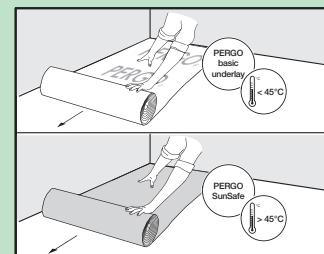
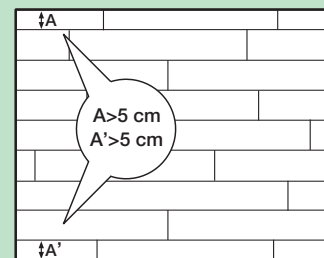
premium click optimum click

Installation

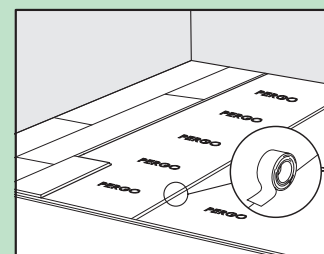
During installation, make sure that you mix the floor panels sufficiently so that there are not too many identical, lighter or darker panels next to each other. To obtain the best visual effect, it is best to fit the panels in the direction of the longest wall and/or parallel to the incidence of light. Ensure that the end joints of the panels in 2 successive rows are never in line, they should be staggered by at least 30 cm (12 inch). For a natural look and better mechanical strength, we recommend no installation of the planks in a pattern but at random formation.



Measure the room before you start installing. Make sure that the first and last row of panels is at least 5 cm wide.



First install the underlay, line/line or room/room, if one is needed. With PERGO vinyl click panels you can choose where you want to begin. Think about what will be the easiest way to install the floor. We advise to start in the left corner of the room and fit an underlay if needed. We strongly recommend to use the special PERGO vinyl underlays, which makes installing easier and has a sound-reducing and levelling function. An underlay which is too soft (CS < 400kPa) or made from the wrong material will damage your floor. A laminate/parquet underlay is not suitable for click vinyl. You can find out more information on the packaging of your underlay or from your dealer. When installing the next line of underlay, it is recommended to connect the underlays using thin tape to avoid overlapping.



premium click optimum click

Installation

The planks against the walls are to be stripped off their click system. Cut off the tongue on the long side of the first panel and row. Make sure that you leave an expansion joint of minimum 2mm (0,08inch), preferably 5 mm (0,20inch). For easy way of working you can use a leftover piece of PERGO vinyl floor as distance spacer.

For installations with floor heating, you need to leave an expansion gap of minimum 5mm (0,20inch).

PERGO vinyl floors can easily be cut with the decor side face up using a special concave vinyl cutting knife. For cutting the vinyl plank, mark the line and use the knife to make a firm cut in the surface. Then break off the plank using both hands. You never need to completely cut through the vinyl.

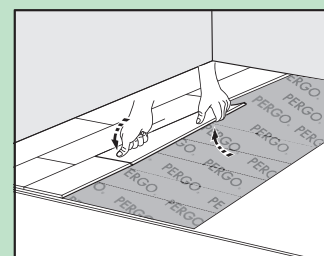
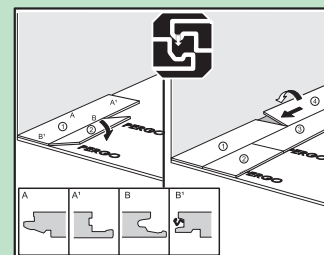
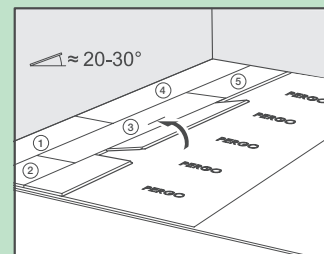
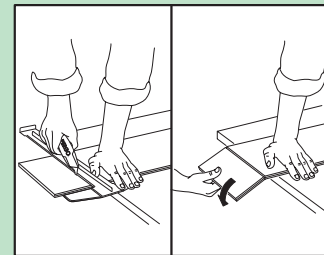
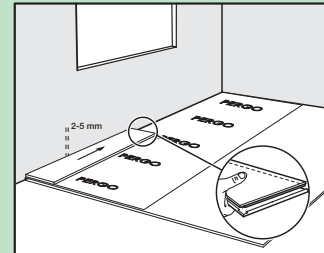
Turn the long side of the first panel of the second row into the already fitted panel at an angle of 20 to 30°. Move the panel to be fitted slightly up and down and at the same time exert some forward pressure. The panels will click together.

Then slide the third plank together horizontally. Slightly lift the plank to be installed by holding your hand underneath about 25cm from the end.

Push the short side joint down gently with your thumb moving from the inner corner towards the outside until you hear and/or feel a “click”. Always check each short side joint (height differences and openings) before continuing. You can press down gently with your thumb on top of every short end joint to ensure good locking.

Don't use a hammer or tapping block as it may possible harm your click connection.

This is the easiest method for installing the PerfectFold™ V click panels. Continue the installation like this row by row towards the end of the room. The easiest way is to be seated on your installed planks.

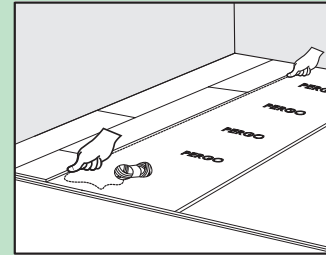


premium click optimum click

Installation

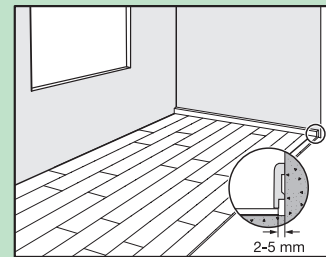
Install the first 3 rows at the wanted position close to the wall. Take a thin rope and hold it along the installed planks to check and adjust the straightness of your installed planks. Make additional checks of the straightness when the floor is installed in bigger areas, irregular shape or in one piece (without dilatation joints between the rooms).

Remember the expansion gap along the perimeter of minimum 2mm (0,08inch) and preferably 5mm (0,20inch).



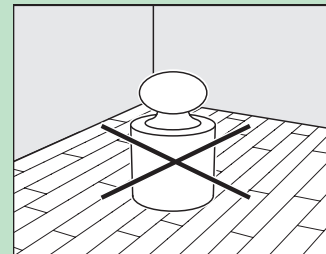
Separate rooms with and without floor heating, or with different temperature controllers, or e.g. corridor vs. kitchen should be installed with a transition profile and an expansion gap of minimum 5mm.

A transition profile is also needed, when the temperatures in adjacent rooms will vary differently above and below the temperature range of 18 - 30°C.



Never block the floor. If heavy/fixed objects (ex. kitchen, kitchen island, build-in cabinets, heavy stoves) are on the floor they act as a wall, so the minimum dilatation should be foreseen there.

Floating installation should stay floating! If this is not possible, use our Pergo glue down vinyl.



premium click

optimum click

Finishing

Inspect the final surface of the installed floor. Install PERGO vinyl skirtings against the wall but never attach the skirting to the floor itself.

In small places with a high moisture level like bathrooms and toilets and where the floor surface is < 10 m², you can fill the expansion gaps with "PERGO vinyl Aqua Sealant". If you fill these expansions gaps, then the gaps must be minimum 5mm AND you are obliged to use a T-profile to disconnect that room from the other rooms.

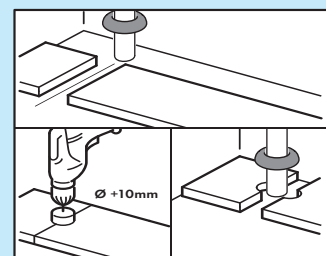
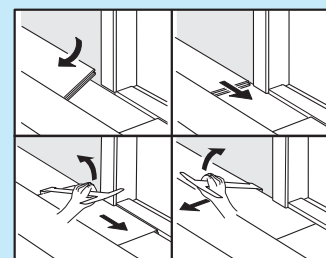
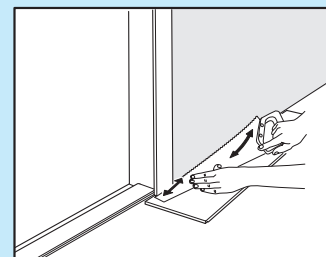
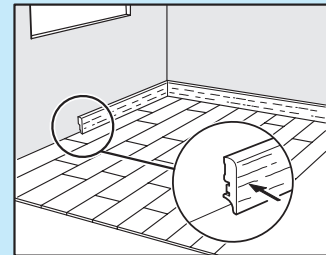
A transition profile is needed, when the temperatures in adjacent rooms will variate differently above and below the temperature range of 18 - 30°C.

When the new flooring meets a threshold or a doorway, we recommend undercutting the door frames or moldings. To secure the right cut, turn a plank upside down and place it on the floor up to the door frame. Then place a hand saw flat against the plank and simply cut through the frame. Remove the cut out and vacuum away debris.

You can now simply click the plank in on the long side at the side of the undercut molding. Then slide to panels to close the end joint. Use the PERGO vinyl installation tool as a pull bar to secure absolute tightness in the long and short joint..

If it is difficult to tilt the planks (e.g. under radiators), use the PERGO vinyl installation tool to pull the panels horizontally together.

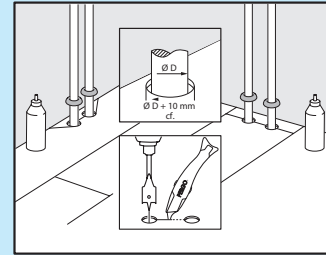
In rows where there is a pipe, make sure the pipe falls exactly in line with the short side of two panels. Take a drill bit with the same diameter as the pipe plus 10 mm (0,4inch). Click the panels together on the short side and drill a hole centered on the joint between the two panels. Now you can install the panels.



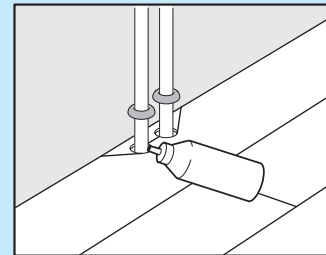
premium click optimum click

Finishing

In case of a double pipe, drill a hole at each of the marked points that is equivalent to the diameter of the pipes plus 10 mm. If located on the long side of the plank, make a 45 degree cut from each hole to the edge of the plank.



Then, using an appropriate glue along the cut edges of the piece you cut out, glue the piece in place. Be sure no glue comes between the cut out piece and the subfloor.



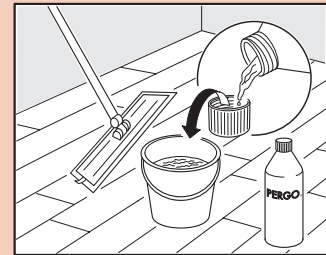
premium click optimum click

Maintenance

You can immediately walk on your new PERGO vinyl floor after installation. It is allowed to use a vacuum cleaner on your vinyl floor. The use of a steam cleaner is forbidden.



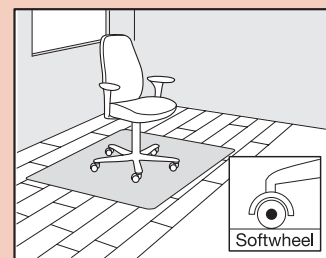
Your vinyl floor can be cleaned with a damp or wet mop. PERGO Vinyl Clean is a maintenance product specifically developed to keep your new vinyl floor in top condition. Never use natural soap detergents since this will leave a sticky film on the surface which will collect dust and dirt and will be difficult to remove. The same with detergents containing scratching particles, these might matt down the surface. It is always important not to overdose any cleaning detergent, as this will lead to a build up of cured detergent which is difficult to remove without using a vinyl stripper.



For further information on how to clean and maintain your floor, please visit www.pergo.com. For specific cleaning instructions in commercial applications or projects, you can contact the PERGO technical department.

Always remove spilled liquids immediately from the floor.

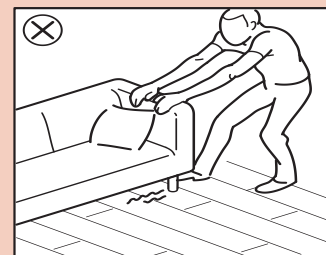
Protect furniture and chair legs. Use (office) chairs type W and seats with soft wheels that are suitable for a vinyl floor and/or use a suitable desk mat.



Never drag heavy items of furniture over the floor, but lift them up.

Make sure furniture legs have a large surface and are provided with non-staining floor protectors. The taller and/or wider the furniture feet are, the greater the repartition of weight will be on the floor and the less chance there is to damage the floor.

Place non-rubber backed mats at all outside entrances to prevent dirt, grit and soil from being tracked onto your floor. This will reduce damages, the maintenance requirement and extend the life of your floor. Please note that prolonged contact with some rubber types can cause a permanent stain.



Do not allow cigarettes, matches or other very hot items to contact the floor as this may cause permanent damage.

INSTALLATION INFORMATION

premium click optimum click

PERGO[®]
VINYL PLANKS & TILES

Maintenance

Ensure that the indoor climate conditions are always kept $> 0^{\circ}\text{C}$ (32°F) and preferably between $18 - 30^{\circ}\text{C}$ ($64 - 86^{\circ}\text{F}$). It is also important to keep the subfloor in the above mentioned temperature range.

